

➤ D5 Mini Model

Handheld Smart Laser Marking Machine

Average output power

20W



Handheld and portable,
wireless marking



6-8 hours long battery life

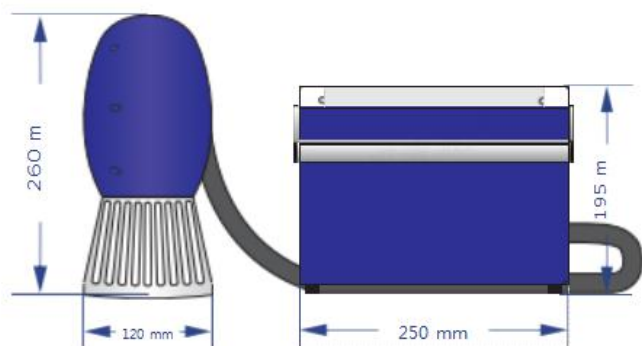


PRODUCT DESCRIPTION

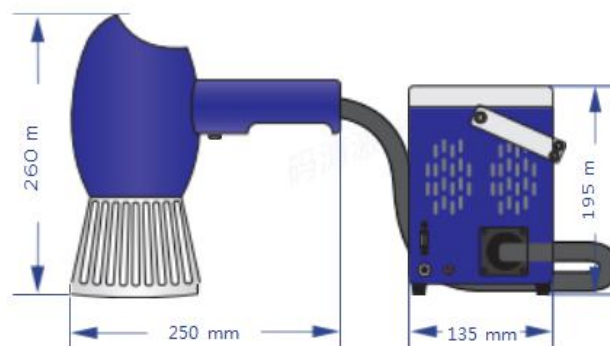
D5 handheld smart laser machine is a portable, battery-powered and fully autonomous marking machine! Thanks to its powerful 24V rechargeable lithium battery power supply system, it can maintain 6-8 hours of work under normal use, with strong endurance and no cable drag, avoiding the embarrassment of sudden power failure during use. Its light weight and multi-functionality make it especially suitable for perfect marking on large, cumbersome or difficult-to-handle work pieces.

The D5 is powerful, sturdy and reliable. The weight of the machine is 6 kg, and its marking head is only 1.25 kg. It has an ergonomic grip, comfortable to hold and easy to operate. The rear USB interface, the software supports: text, pattern, two-dimensional code, bar-code, serial number, graphics and other marking content. In addition, D5 also has a special box that is convenient for storage and can be carried to different locations. It is one of the smallest rechargeable laser marking machines on the market!

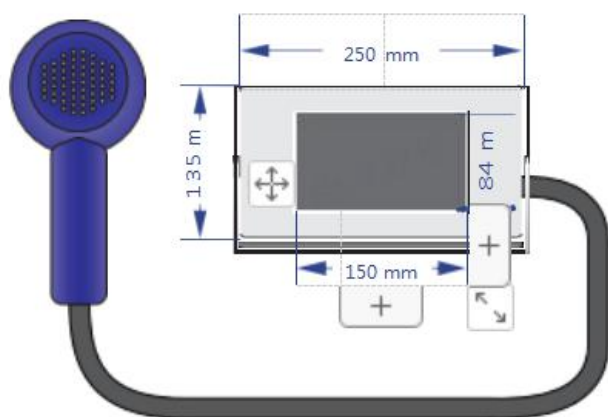
➤ PRODUCT SIZE



Front of the device

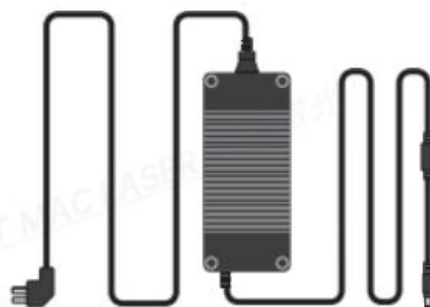


Device side



Light route 1160 mm

Device desktop (top view)



power cable 2000 mm

Power charger

➤ MARKING EFFECT



● Metal steel



● Metal iron



● Metal aluminum



● Metallic copper



● Electroplating paint



● Hard plastic

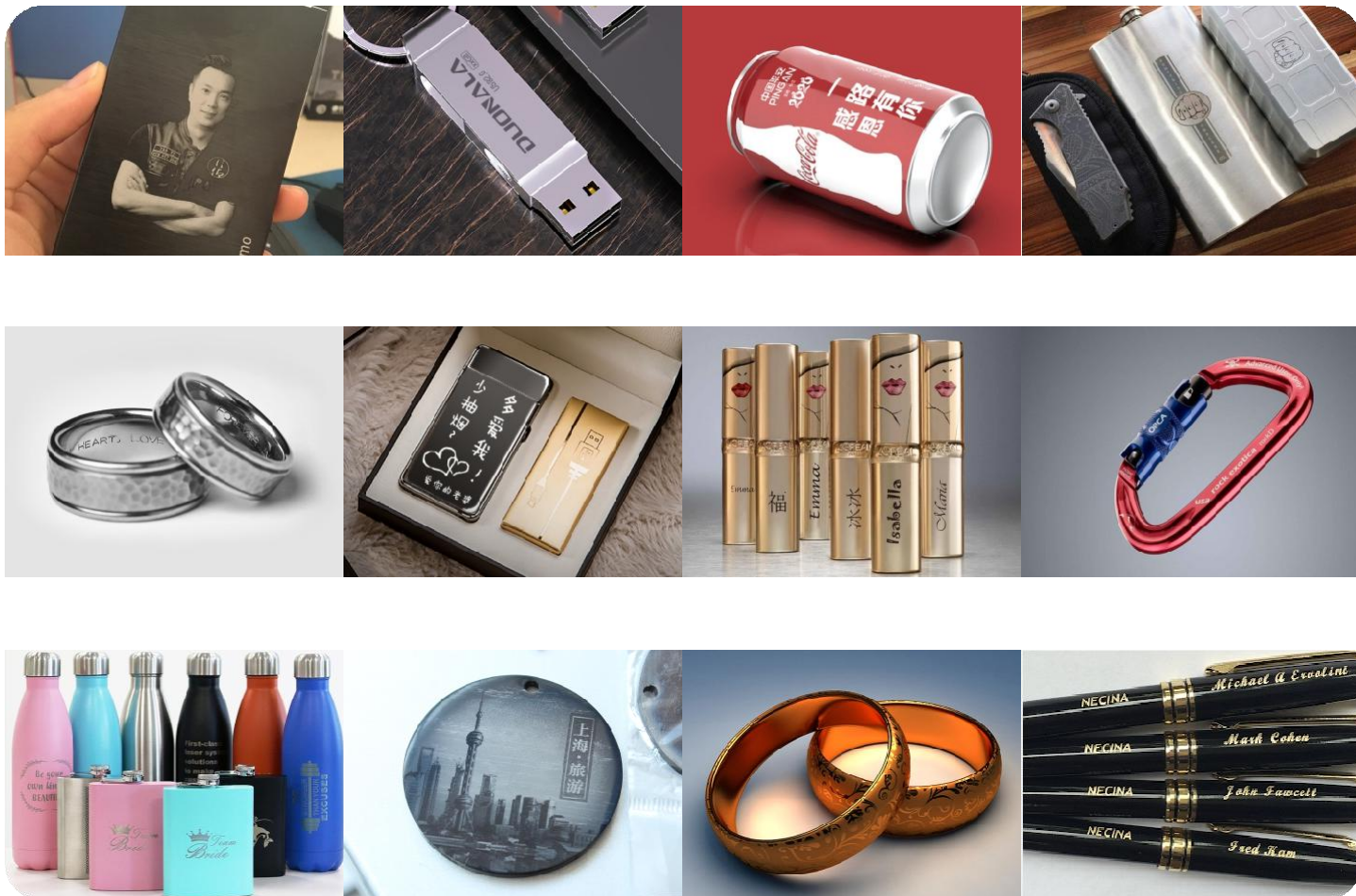


● Painting materials



● wood

➤ MARKING EFFECT



MODEL PARAMETERS

Model		D5
Laser parameters	Laser model	MFP-20X
	Output Power	18.5W
	Beam quality M2	≤1.4
	Pulse repetition frequency	27-60 kHz
	Laser wavelength	1064 ± 5
	Output power stability	< 3%
	Design life	About 100,000 working hours (non-lifetime)
Optical properties	Marking range	80mm
	Engraving depth	≤1mm (Depends on power and time)
	Engraving speed	≤10000mm/s
	Repeat accuracy	± 0.002
	Minimum marking line width	0. 1mm
	Minimum character height	0.15mm
Use environment	Battery life	It can work for 6-8 hours under normal use
	cooling method	Built-in air cooling
	System power supply	500W / 100-240V / 50/60Hz
Other parameters	operating system	Linux operating system
	file format	The software supports text, pattern, two-dimensional code, bar-code, serial number, graphics and other marking content (standard USB input)
	Dimensions	Control chassis: 250X135X195 mm Marking head: 250X120X260 mm
	Total Weight	Machine 6kg, marking head 1.25kg



PRODUCT FEATURE

Wireless marking

- Configure 24V lithium battery to achieve complete wireless
- Under normal use, it can work for 6-8 hours, with strong endurance
- Automatic start-stop design, automatic shutdown after 60 seconds of standby, saving power and consumption

100% portable

- The weight of the whole machine is 6KG, the marking head is only 1.25KG, it is small and light, and it can be printed on the go
- Especially suitable for marking on large, heavy or difficult to move workpieces

High-quality light source

- Adopt advanced fiber 20W laser
- High electro-optical conversion efficiency, good output beam quality, and high reliability
- It can be flexibly applied to non-metallic materials and some non-metallic materials

Friendly operation page

- Horizon Laser's independent and independent coding system is powerful and easy to operate
- Support text, patterns, QR codes, barcodes, serial numbers, graphics, etc.
- The host uses the linux system, which has reliable security and stability

➤ PRODUCT FEATURE



The whole machine weighs 6KG, is light and portable, and can play on the way

Powerful and reliable, the weight of the whole machine is 6 kg, and its marking head is only 1.25 kg. Ergonomic grip, comfortable to hold and easy to operate.

Advanced fiber 20W laser

Using MAX 20W fiber laser, the spot quality is good, the output light power is stable, and it can be flexibly applied to metal materials and some non-metal materials.



Long battery life, 6-8 hours working time

It uses 24V lithium battery to achieve complete wireless, which can maintain work for 6-8 hours under normal use.
Strong endurance

Play while charging, the device can be charged while working

The power supply control design is added, the equipment can be charged and fired during work to realize continuous work and improve processing efficiency



➤ PRODUCT FEATURE



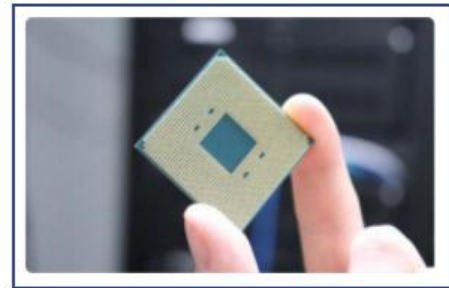
Automatic start and stop design, saving electricity and reducing consumption

Added an automatic start-stop design, which will automatically stop after 60 seconds of standby, and restart by tapping the screen;

The standby time can be customized, which effectively saves unnecessary power consumption

Eight-core CPU,
configure linux system

The host adopts an 8-core processor and is equipped with a Linux system with a high security level, with stable performance, fast response speed, and not easy to be poisoned and downtime



Diversified marking content, support language customization

Rear USB interface, software supports: text, pattern, two-dimensional code, bar code, serial number,

Marking content such as graphics, support operating system language customization

LOGO can be customized

The boot page of the operating system and the LOGO in the upper left corner can be customized

