



# 地平线激光

HORIZON LASER

Horizon Laser is a new high-tech enterprise integrating technical services, technology promotion, laser equipment reservation design, sales and integrated services. The company is mainly committed to promoting laser processing technology, expanding laser applications, and reducing customer information asymmetry through alternative sales and integrated services of laser equipment, and strives to achieve: let every customer understand what they buy and use them with confidence.

Consulting Hotline: 400-0512-966

East China: No. 15, Tangxi Road, High-tech Zone, Suzhou City, Jiangsu  
Province

South China: Room 502, Building 10, Huafa Industrial Park, Fuyuan 1st  
Road, Baoan District, Shenzhen, Guangdong, China

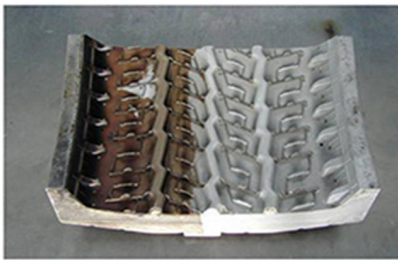
## Handheld laser cleaning machine

Hand-held laser cleaning equipment uses optical fiber to transmit high-energy-density laser. The hand-held cleaning head emits light to clean the oxide layer, paint, weld, etc. on the surface of metal materials such as carbon steel, stainless steel, and aluminum alloy. The operation is flexible and convenient.



The handheld cleaning equipment integrates a fiber laser, a handheld cleaning head, a control system, a safety light emitting system, and a cooling system. The overall design is small, beautiful, and easy to move, making it convenient for customers to choose the working location and scope without space limitations. This set of equipment can be widely used in mold cleaning, weld cleaning, rust cleaning and other fields.

### ➤ Industry application



Tire Molding Cleaning



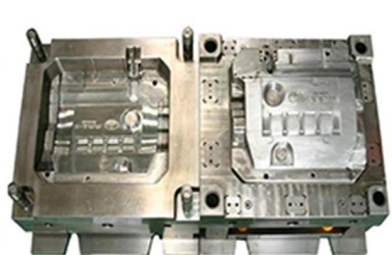
Rubber & Silicone Mold Cleaning



Fiber Mold Cleaning



Underwear Mould Cleaning



Die-Casting Mold Cleaning



Pharmaceutical Mold

- ✓ No damage to the mold base material, increases the lifespan of the mold
- ✓ High precision cleaning quality, improve product quality.

- ✓ High Cleaning Efficiency, labor cost saving.
- ✓ Environmental protection, no consumables.



Brake Pad Cleaning



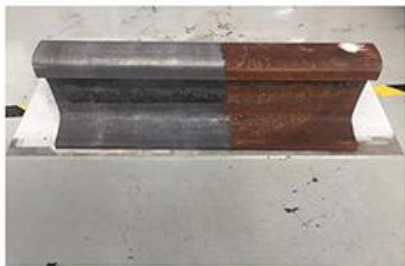
Clutch Cleaning



Car Frame Cleaning

- Car frame pre-welding and after welding cleaning
- Engine outside and inside cleaning

- Brake pad and disc cleaning
- Clutch and many kinds of auto parts cleaning



Rail Rust Removal



Train Axle Cleaning

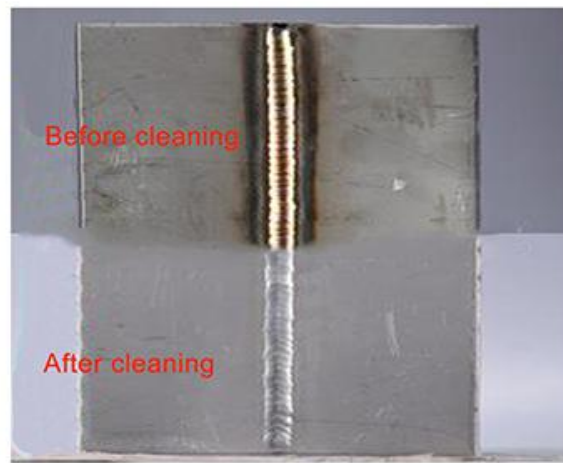


Train Wheel Rust Removal

- Rail rust removal
- Train gear cleaning

- Train axle rust removal
- Train axle box cleaning

- Wheel maintenance
- Train paint cleaning



- Pre-treatment before welding

- Welding bead cleaning after welding

## ➤ Parameter

model	DPX-LC1000	DPX-LC1500	DPX-LC2000
Laser type	CW fiber laser source		
Rated output power	1000W	1500W	2000W
Power adjustment range	10%~100%		
Laser center wavelength	1080±3nm		
output method	Continuous/modulation		
Maximum modulation frequency	50kHz		
Power instability	<3%		
Fiber output interface	QBH		
Indicating system	Red light		
Length of cleaning gun armor cable	10m		
Collimated focal length	50mm		
Focus focal length	400mm		
Weight of cleaning gun	Around 1 kg		
Protective gas method	Lateral protection		
Adjustable cleaning width	5~50 mm		
product structure	All-in-one		
Product size L*D*H	1200*600*1300mm		
product weight	280kg		320kg
Working temperature	0~40℃		
Working environment humidity	<70%		
Operating Voltage	Single phase 220VAC (Must be grounded) /Three phase 380VAC (Must be grounded)		
Total power	<5kw	<7kw	<9.5kw